

STAGE ONE

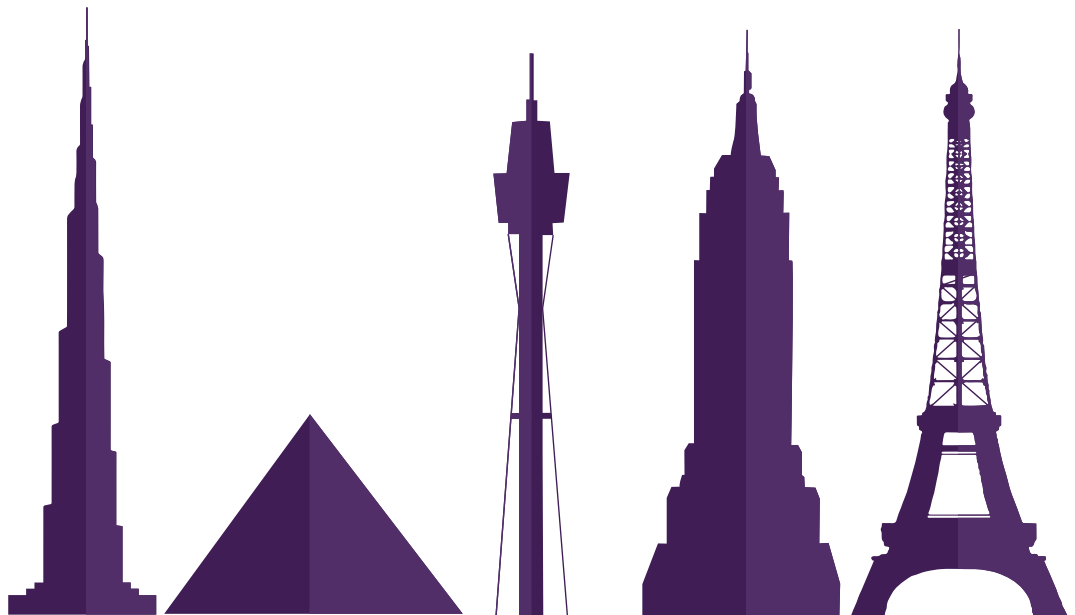
Curriculum Links: ST1-8ES · ST1-14BE · GE1-1 · GE1-3 · MA1-16MG

Activity One

Tallest to Smallest

Label these towers with their names. Then, order them from tallest to smallest, 1 being the tallest, 5 being the shortest. Then, add the height of each tower. Then, answer where in the world the tower is located.

HINT:
You will find the height of these towers listed on the wall before you enter the 4D cinema.



Name of Tower:

--	--	--	--	--

Height of Tower:
(in metres)

--	--	--	--	--

Order of Towers tallest to smallest:
(Label 1 - 5)

--	--	--	--	--

Location of Tower:

--	--	--	--	--

towerkids

education

STAGE ONE

Curriculum Links: ST1-8ES · ST1-14BE · GE1-1 · GE1-3 · MA1-16MG

Activity Two

Find me!

Look out the windows of the Observation Deck and see if you can find the following iconic locations. Mark the corresponding number on the map when you find them.

HINT

Use the binoculars and touch screens on the Observation Deck to help you find these.

1. Darling Harbour

2. Sydney Fish Market

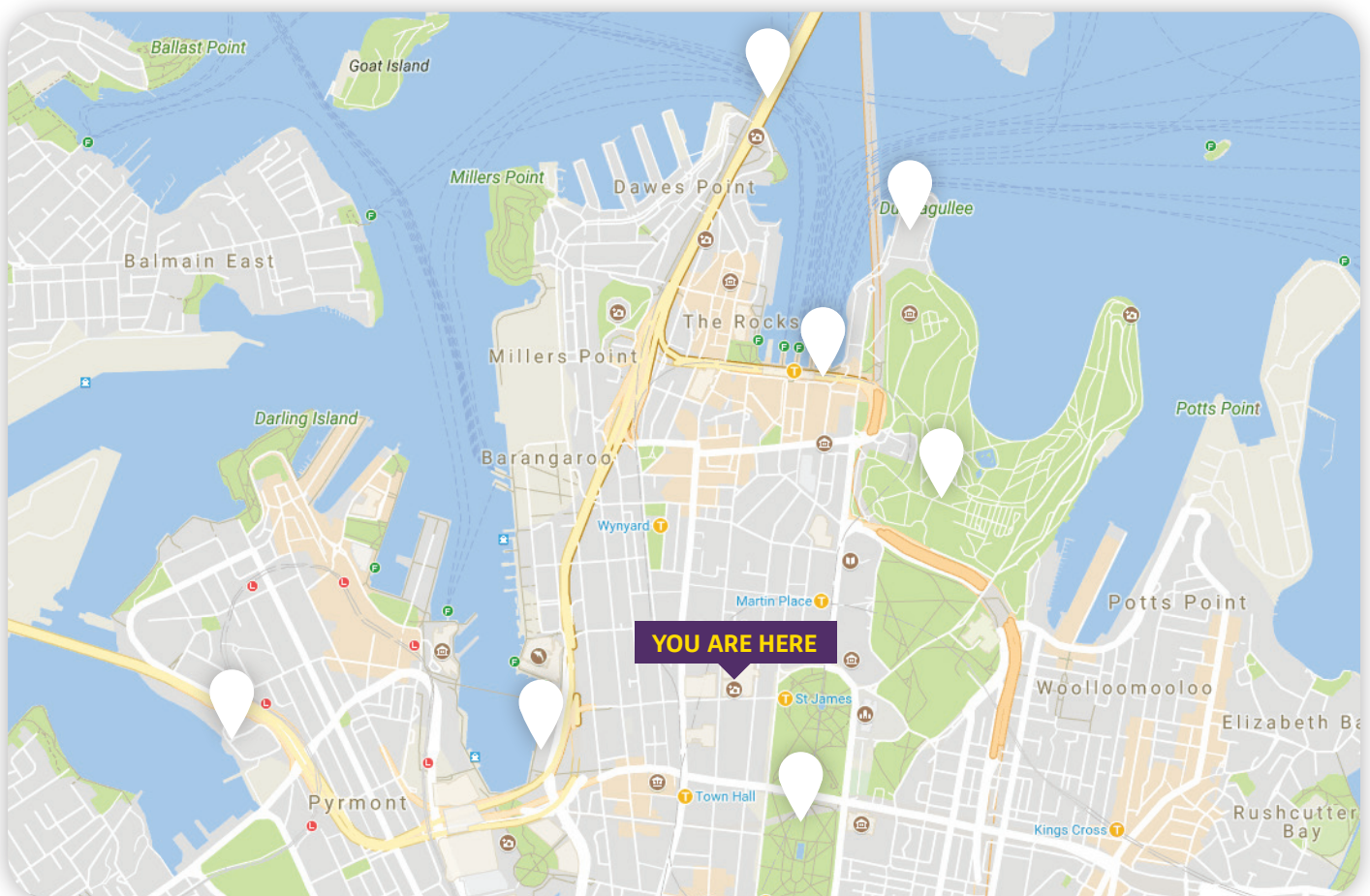
3. Sydney Opera House

4. The Sydney Harbour Bridge

5. Circular Quay

6. Hyde Park

7. The Royal Botanical Gardens



STAGE ONE

Curriculum Links: ST1-8ES · ST1-14BE · GE1-1 · GE1-3 · MA1-16MG

Activity Three

Look up to the sky!

What type of clouds can you see in the sky today

.....

.....

Match the following term to the correct type of cloud you could find in the sky.



Stratus · Nimbostratus · Cumulus · Altocumulus



HINT

The images and description of different types of clouds can be found on the Western side of the Observation Deck.

STAGE ONE

Curriculum Links: ST1-8ES · ST1-14BE · GE1-1 · GE1-3 · MA1-16MG

Activity Four

Circle the words that best describe the weather conditions you can see today out the windows.

HINT

Use the binoculars and touch screens on the Observation Deck to help you find these.

Cloudy 

Windy 

Dark 

Clear 

Foggy 

Hot 

Sunny 

Light 

Cold 

Raining 

Bright 

Freezing 

Circle the types of clothes people are wearing based on the weather conditions outside.

T-shirts 

Beanies 

Sandals 

Jumpers 

Scarves 

Skirts 

Shorts 

Jackets 

Singlets 

Jeans 

Boots 

Pants 

Thongs 

STAGE ONE

Curriculum Links: ST1-8ES · ST1-14BE · GE1-1 · GE1-3 · MA1-16MG

Activity Five

Direction!

Imagine the Sydney Tower Eye is at the centre of a compass.
List three things you can see at each point of the compass, North, South, East and West.

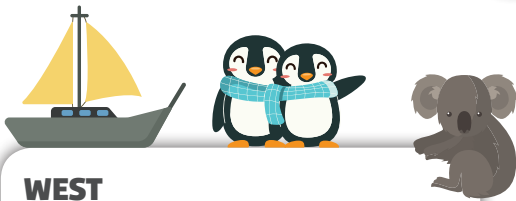
HINT

North, South, East and West are marked on the Observation Deck windows so you know which direction you are looking!



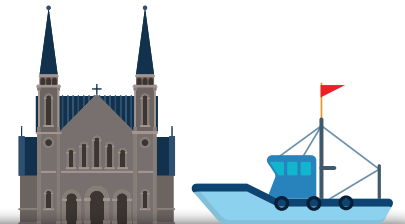
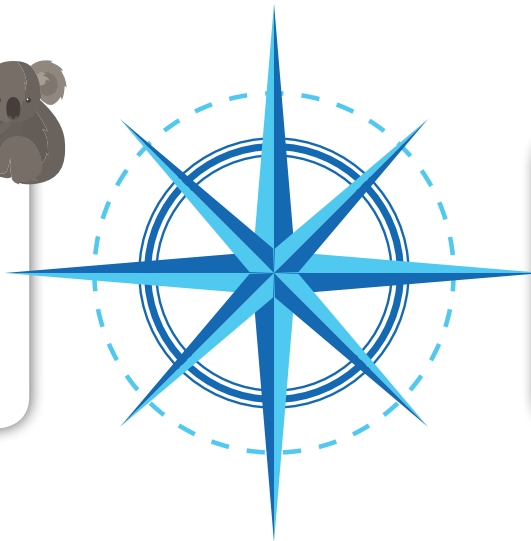
NORTH

1.
2.
3.



WEST

1.
2.
3.



EAST

1.
2.
3.



SOUTH

1.
2.
3.

